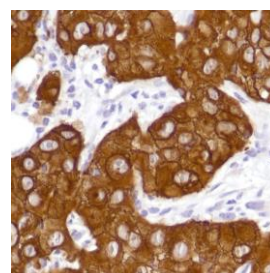




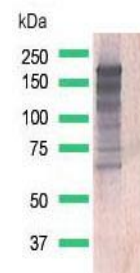
Rabbit Anti-Human Epidermal Growth Factor Receptor (EGFR) (E746-A750del) Monoclonal Antibody (Clone SP111)

CATALOG #:

- M4110** 0.1 ml rabbit monoclonal antibody purified by protein A/G in PBS/1% BSA buffer pH 7.6 with less than 0.1% sodium azide.
- M4112** 0.5 ml rabbit monoclonal antibody purified by protein A/G in PBS/1% BSA buffer pH 7.6 with less than 0.1% sodium azide.
- M4114** 1.0 ml rabbit monoclonal antibody purified by protein A/G in PBS/1% BSA buffer pH 7.6 with less than 0.1% sodium azide.
- M4111** 7.0 ml pre-diluted rabbit monoclonal antibody purified by protein A/G in TBS/1% BSA buffer pH 7.6 with less than 0.1% sodium azide.



*Human lung carcinoma
stained with anti-EGFR
(del) antibody*



*Western Blot
analysis of
HCC827 cell
lysate with anti-
EGFR (E746-
A750 del)
antibody*

INTENDED USE:

For Research Use Only. Not for use in diagnostic procedures.

CLONE:

SP111

IMMUNOGEN:

Synthetic EGFR peptide with deletion of E746-A750

IG ISOTYPE:

Rabbit IgG

EPITOPE:

Not determined

MOLECULAR WEIGHT:

175 kDa

SPECIES REACTIVITY:

Human (tested). (See www.springbio.com for information on species reactivity predicted by sequence homology.)

DESCRIPTION:

EGFR is a transmembrane tyrosine kinase of HER/erbB protein family. EGFR somatic mutations such as L858R in exon 21 and short in-frame deletion of E746-A750 in exon 19 are present in a subset of lung adenocarcinoma.

APPLICATIONS:

Immunohistochemistry (IHC) and Western Blotting

IHC PROCEDURE:

Specimen Preparation: Formalin-fixed, paraffin-embedded tissues are suitable for use with this primary antibody.

Deparaffinization: Deparaffinize slides using xylene or xylene alternative and graded alcohols.

Antibody Dilution: If using the concentrate format of this product, dilute the antibody 1:100. The dilutions are estimates; actual results may differ because of variability in methods and protocols.

Antigen Retrieval: Boil tissue section in EDTA buffer, pH 8.0 for 10 min followed by cooling at room temperature for 20 min.

Primary Antibody Incubation: Incubate for 30 minutes at room temperature.

Slide Washing: Slides must be washed in between steps. Rinse slides with PBS/0.05% Tween.

Visualization: Detect the antibody as instructed by the instructions provided with the visualization system.

POSITIVE CONTROL:

Lung Carcinoma with E746-A750 Deletion

WESTERN BLOTTING:

Recommended starting protocol: Dilute the antibody 1:300. Incubate for 1 hour at room temperature.

The dilution is an estimate; actual results may differ because of variability in methods and protocols. Optimal dilution and procedure should be determined by the end user.

WESTERN BLOTTING

POSITIVE CONTROL:

HCC827

CELLULAR LOCALIZATION:

Cytoplasm, Membrane

STORAGE & STABILITY:

Store at 2-8°C. Do not freeze. The user must validate any other storage conditions. When properly stored, the reagent is stable to the date indicated on the label. Do not use the reagent beyond the expiration date.

There are no definitive signs to indicate instability of this product; therefore, positive and negative controls should be tested simultaneously with unknown specimens.

If unexpected results are observed which cannot be explained by variations in laboratory procedures and a problem with the reagent is suspected, contact Technical Support at spring.tech@ventana.roche.com.

**WARNINGS &
PRECAUTIONS:**

1. Avoid contact of reagents with eyes and mucous membranes. If reagents come into contact with sensitive areas, wash with copious amounts of water.
2. This product is harmful if swallowed.
3. Consult local or state authorities with regard to recommended method of disposal.
4. Avoid microbial contamination of reagents.